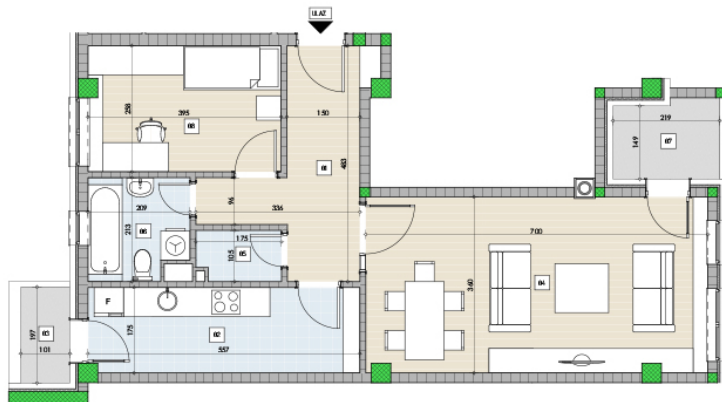


Lamela B – Sprat 4 – Stan 35



1	HODNIK	9,48m ²
2	KUHINJA	9,92m ²
3	TERASA	2,40m ²
4	DNEVNA SOBA	24,92m ²
5	OSTAVA	1,63m ²
6	KUPATILO	3,94m ²
7	LOBA	3,59m ²
8	SOBA	10,08m ²
UKUPNA POVRŠINA		65,85m ²
+ OSTAVA		2,72m ²
UKUPNA POVRŠINA		68,57m ²

TAMIŠ KAPIJA | LAMELA B | STAN 35 | list br. A.03.11